

- MriStudio is a family of programs for comprehensive quantitative analyses of DTI data;
- The programs consists of DtiStudio, Landmarker, and RoiEditor, which communicate seamlessly.

MriStudio

DtiStudio

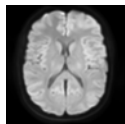
Landmarker

RoiEditor

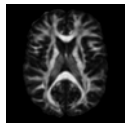
DTI processing

Scanner

DWI



Tensor



Maps

Fiber Tracking

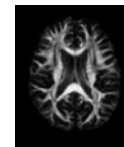
Co-registration
 Eddy current correction
 Automated quality check

Image normalization

Pre-processing

- Format
- Size
- Skull strip
- b0 distortion cor.

Linear normalization



Non-Linear normalization

Built-in Atlases

- Population-averaged (Philips & Siemens)
- Single-subject
- Talairach

Quantification

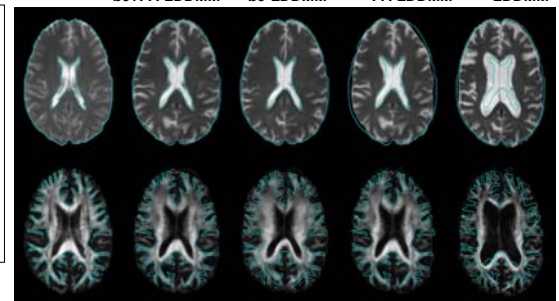
ROI-based

- Manual
- Threshold
- Region growing
- Vector-based

Atlas-based



A) Template B) Subject After b0+FA-LDDMM C) Subject After b0-LDDMM D) Subject After FA-LDDMM E) Before LDDMM



References

- [1]. Mori S, et al., Ann. Neurol., 45:265-269, 1999.
 [2]. Jiang H, et al., Comput Methods Programs Biomed., 81:106-116, 2006.

Acknowledgements: This study was supported in part by NCCR resource grant NCCR P41RR15241, U24RR021382 and RO1AG20012